

HIGHLINES

January 2020

A publication for members of Pella Cooperative Electric

WIN A WEEK-LONG TRIP TO WASHINGTON D.C.



IOWA YOUTH TOUR WASHINGTON D.C. 2020

NEXT YOUTH TOUR - June 18-25, 2020

Local high school students are invited to apply now for a chance to win a one week, all-expenses-paid trip to Washington, D.C. June 18-25!

The trip, sponsored by Pella Cooperative Electric, includes a guided tour of the U.S. Capitol, as well as tours of major sites in and around Washington, such as George Washington's home at Mount Vernon, the museums of the Smithsonian Institution; the Newseum; and the Jefferson, Lincoln, Martin Luther King Jr., Vietnam, Korean and World War II memorials, and more.

The Iowa Youth Tour winners will travel to Washington D.C. and return to Des Moines by air. Once in Washington D.C., the students will join about 1,800 other students representing rural electric cooperatives from across the country.

Pella Cooperative Electric is committed to our consumer-members and the communities we serve. Through Youth Tour, we encourage area youth to learn more about their nation's government and the electric cooperative business model, all while developing valuable leadership skills.

If you know a high school sophomore, junior or a student who holds the status equivalent to a sophomore or junior in an accredited home-based school, and whose parents/ guardians are members of Pella Cooperative Electric, encourage them to apply for this once-in-a-lifetime opportunity.

To learn more about Youth Tour, visit pella-cea.org and find more information and the application under the "Community" tab.

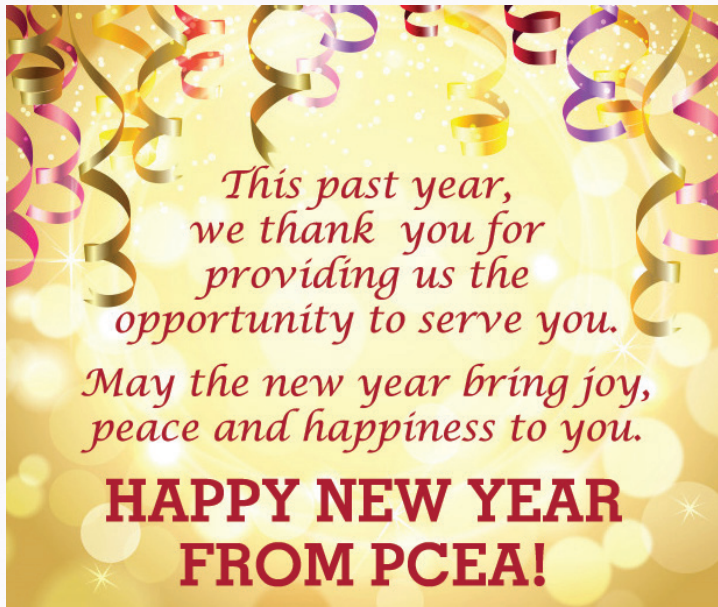


Early Christmas Present Arrives at PCEA

Christmas came early this year, when the new bucket truck pulled in at the Pella Cooperative Electric office late in November.

The new truck, a 55 ft. bucket truck with all-wheel drive, replaces the 2009 55 ft. bucket truck. This new truck is a bit of a change from the traditional yellow bucket trucks that have long been the company standard. The decision was made to go to all white on this model for the cost savings and overall maintenance of paint matching should there be any damage to the truck in the future.

Pictured: Lead Lineman Randy Reineke takes the truck out for its first full day's work.



*This past year,
we thank you for
providing us the
opportunity to serve you.
May the new year bring joy,
peace and happiness to you.*

**HAPPY NEW YEAR
FROM PCEA!**

Pella Cooperative Electric

Your Touchstone Energy® Cooperative
The power of human connections



State Law Requires Notification of Alternate Energy Production

In 2012, the Iowa Legislature approved a bill that requires notification to electric utilities prior to installing an alternate energy generator. The notification requirement applies to any type of electric generating technology including:

Solar	Wind Turbine
Waste management	Resource recovery
Refuse-derived fuel	Agricultural crops or residue
Wood burning facility that will be connected to an electric transmission or distribution line	

Under this legislation, the owner of an alternative energy production facility must provide written notification to their electric utility at least 30 days before construction or installation of a generator.

If you are considering installing an alternative energy system, please contact Pella Cooperative Electric at (800) 619-1040. Let us provide information and assistance before you decide to purchase any type of alternative energy system that requires interconnection with the electric grid.

Required Notice of Complaints

The Iowa Utilities Board requires that all non-rate regulated utilities post the following notice to its membership. If a member has a problem with his/her service, please call or write Pella Cooperative Electric, P.O. Box 106, Pella, IA 50219, or call toll free at (800) 619-1040.

If your complaint is related to service disconnection, safety or engineering standards, or renewable energy and Pella Cooperative Electric does not resolve your complaint, you may request assistance from the Iowa Utilities Board by:

1. Calling (515) 725-7321 or toll-free (877) 545-4450;
2. Writing to 1375 E. Court Ave., Room 69, Des Moines, IA 50319-0069; or
3. Sending an email to customer@iub.iowa.gov



Winter storms can cause hazardous road conditions, downed power lines, and extended power outages, something none of us like to experience! But knowing that the winter storms could brew up at any time, now is the time to prepare to safely weather the storms.

Before a storm ever begins, turn into your local weather station for weather forecasts. It is important to know the differences among various watches and warnings.

Winter Storm Watches signify that stormy conditions, including heavy snow, freezing rain, or sleet, are likely within the next few days. You should be alert, as this means adverse conditions could begin within the next 12 to 48 hours.

Winter Storm Warnings call for stormy conditions to begin within the next 24 hours. Those in the range of the warnings should be mindful of the impending conditions and consider canceling plans to travel outside of the home.

Blizzard Warnings advise those in the affected areas to seek refuge immediately due to high levels of snow, and strong winds.

If travel is necessary, be especially cautious driving, and keep an emergency kit in your vehicle. Its supplies should include a windshield scraper, first aid kit, a cell phone charging adaptor, booster cables, a blanket, and a flashlight with extra batteries.

Never drive over a downed line because that could pull down the pole and other equipment, causing additional hazards. If you see a downed line, do not get out of your car. The safest place is inside the vehicle. Contact your utility immediately.

If the power goes out, notify PCEA of the outage. Have an emergency kit prepared to help you and your family weather the storm and the outage safely and comfortably. Some of the items this kit should include are bottled water, non-perishable food, flashlights, a weather radio and extra batteries.

If you are using an alternative heating source during an outage, know how to use it safely and have all supplies for it gathered. To help you and your family stay warm during an outage, dress warmly, cover windows at night, close off unneeded rooms, and place draft blocks at the bottom of doors.

Only venture outside if absolutely necessary. Downed power lines could be submerged in snow and ice, making them difficult to see. If you must go outside, use caution and treat all downed and hanging lines as if they are energized. Stay away, warn others to stay away, and immediately contact your utility provider.

Be prepared and stay safe.



SAVE THE DATE
Pella Cooperative Electric Association
will hold its Annual Meeting Tuesday,
April 7. Please plan to attend!

- 2020 Budget was approved.
- Nominating Committee was appointed. Action taken to approve names.

January's board meeting is
scheduled for Jan. 30.

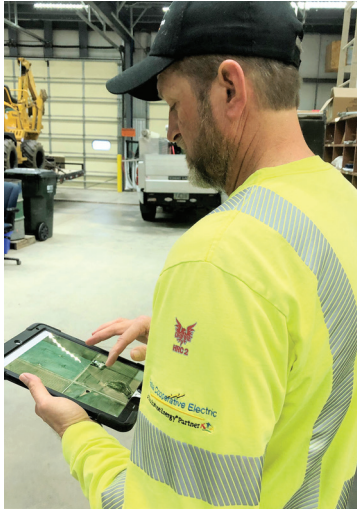
*Board
Briefs*

Technology in the Workplace

While the office work at Pella Cooperative Electric has been done with the help of computers for many years, and as technology continues to advance in many areas of our industry, it became apparent it was time for us to step it up a notch.

In November, our line crew began using iPads equipped with different apps to help make their jobs more streamlined while they are in the field. This technology allows them to do their daily job briefings, receive information from Iowa One Call for locates, and have the construction specification book available to them in digitized format when doing line construction.

Linemen can now check safety data sheets for handling any hazardous chemicals, view the office calendar for the outage rotation schedule, and see the system map. Currently the most used application is the Command Center where they can obtain up-to-date information on outages and the locations of outages on the command center map.



Line Foreman Rob Burton uses his iPad to check for outages across the PCEA service territory.

As the journey continues down the path of technology, we will soon be able to pull up customer information while in the field and send service orders directly to the line crew to get the job done faster and without all the current paper shuffling. When this process is used the office will see a near real-time update back on the office computers.

Directors Attend IAEC Annual Meeting

Pella Cooperative Electric Board Members Bryce Arkema, Carroll Hoksbergen, Steve Inskeep, Bob Van Soelen and Duane Ver Ploeg, along with Jon Miles, CEO and Jolyn Hartson, Administrative Asst./HR Coordinator, attended the Iowa Association of Electric Cooperative's (IAEC) Annual Meeting December 5 & 6.

This year, the meeting centered around the power of cooperative commitment where attendees learned more about NRECA International's electrification project in Guatemala that drew linemen from across the country, and received a



Pictured from left: Carroll Hoksbergen; Jon Miles, PCEA CEO; Duane Ver Ploeg, board president; Bryce Arkema, Bob Van Soelen, board treasurer; and Steve Inskeep.

Youth Tour perspective from Sarah Herz, who was sponsored by Chariton Valley Electric Cooperative.

IAEC Board President Steve Seidl and IAEC EVP/General Manager Chuck Soderberg provided reports on the association's highlights from 2019. Author and Gold Medalist Mike Schlappi closed the meeting with an inspirational and powerful message of overcoming challenges.

Keeping You Connected

The average home now has 10 Wi-Fi connected devices. That number is expected to explode to 50 in 2020. Technology and the gateways that keep it working use electricity, so you'll depend on your electric cooperative for more than just electric lights for years to come. Your cooperative is keeping you connected to the world in ways our forefathers never even imagined!

PCEA works hard to provide service that is reliable, keep it affordable, and make it even more valuable to our members.

Connecting your home to the world at the flip of a switch.

That's the power of your membership.

Pella Cooperative Electric
Your Touchstone Energy® Cooperative

Bright Idea



Let the sunshine in! For additional warmth, open drapes over windows that receive sunlight during the day, especially if they face the south. Close them at night, which can reduce heat loss from a warm room up to 10%. *Source: energy.gov*

Use Back-Up Generators Safely

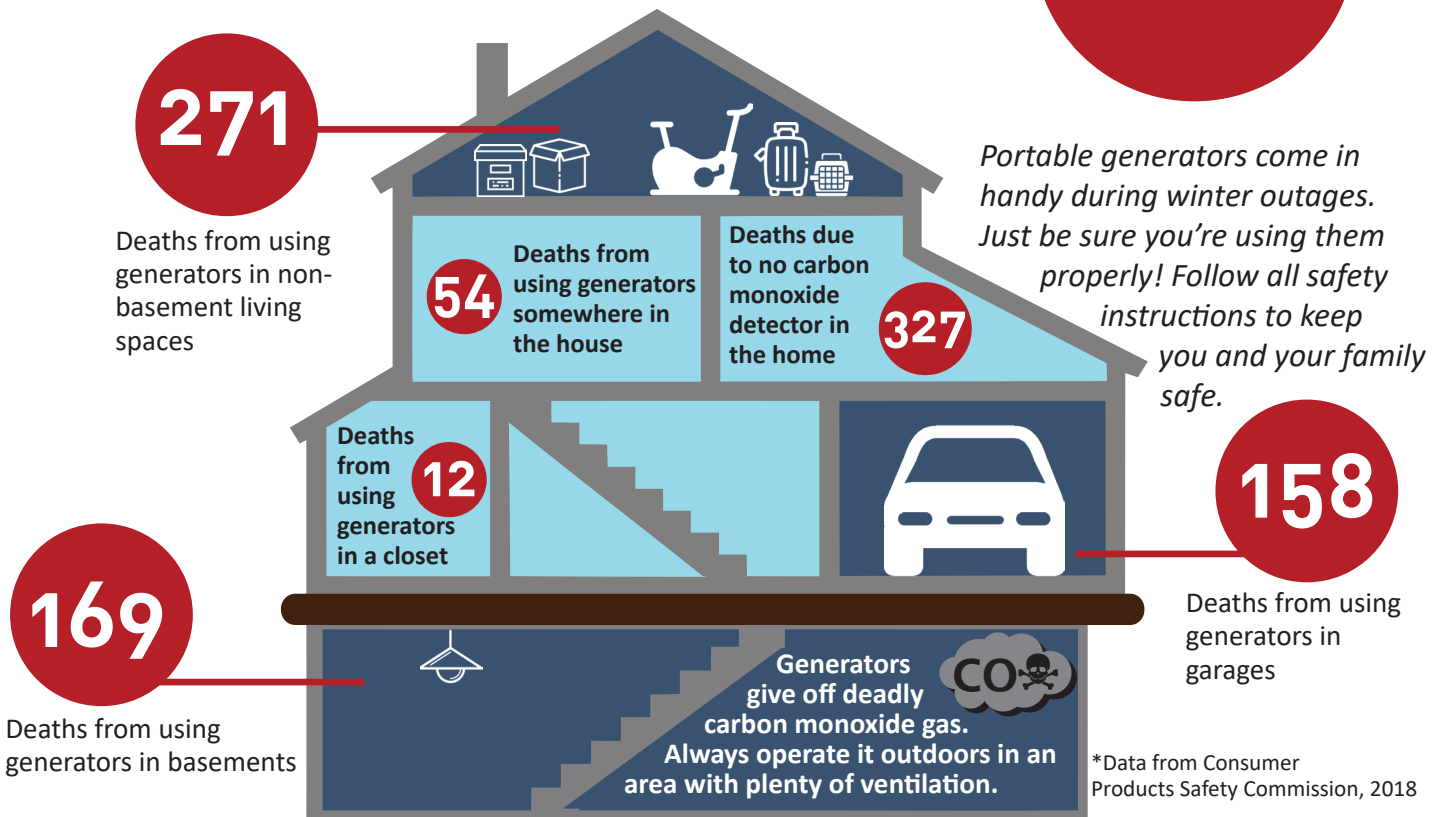
Generators can provide a great, temporary source of power during storm-induced electrical outages but can be deadly if improperly installed or operated. Please be prepared to correctly use your generator not only for your safety but the safety of others. Here are a few tips to consider:

- Make sure you know how to operate the generator safely. Unsafe operation can threaten you, your family, neighbors and even the linemen working to restore power. Unsafe installation or operation may also result in a lawsuit and your insurance may not cover your liability.
- Temporary-use generators should not be connected to the circuit breaker or fuse box and should not be plugged into a household outlet. Portable generators should only be used with extension cords to power lights and small appliances.
- Permanently installed generators should be wired into your home by a qualified electrician, using a transfer switch that prevents potentially deadly back-feed.

- Generators should only be operated outside a home to prevent toxic and potentially deadly exhaust from entering a home.
- Keep generators away from children and pets.
- When starting a generator, disconnect all appliances that might be connected to it. That will not only protect them but prevent a fuse from being blown on the generator.
- Connect appliances to your portable generator after it has been started. Use only three-prong plugs that allow connections to be grounded.
- When refueling generators turn the generator off and allow the engine to cool in order to prevent a fire should the gas tank overflow.
- When the generator is no longer needed, allow it to cool down before storing it.

Deaths Related to Generators, 2005-2017*

712



HIGHLINES

Published monthly by:
Pella Cooperative Electric
2615 Washington Street
P.O. Box 106
Pella, Iowa 50219-0106
Edited by: Sue Warrick

Phones answered 24 hours a day
641-628-1040
800-619-1040
Web site: www.pella-cea.org
Email: service@pella-cea.org

Pella Cooperative Electric is a not-for-profit, member-owned electric cooperative. The co-op exists to provide electric service at cost. It is the members (anyone who gets electricity from the cooperative), not outside investors, that own and control the co-op. Cooperatives are governed by a member-elected Board of Directors. This institution is an equal opportunity provider and employer. See pella-cea.org > Nondiscrimination Statement for more information.

Board of Directors: Bryce Arkema, Darrell Boot, Carroll Hoksbergen, Steve Inskeep, Bob Van Soelen, Norman Van Zante, Duane Ver Ploeg, and CEO Jon Miles.

Open weekdays 7:30 am - 4:30 pm; excluding holidays